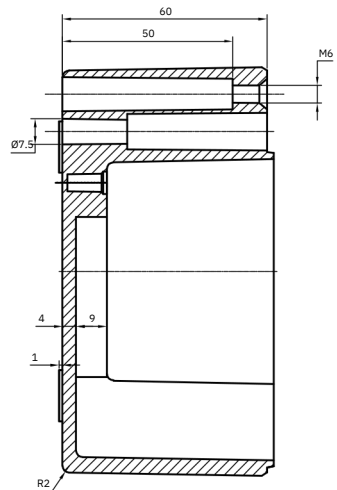
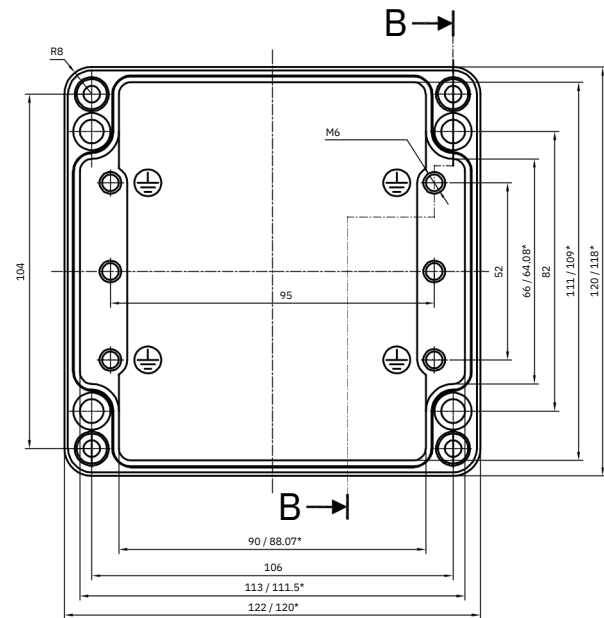


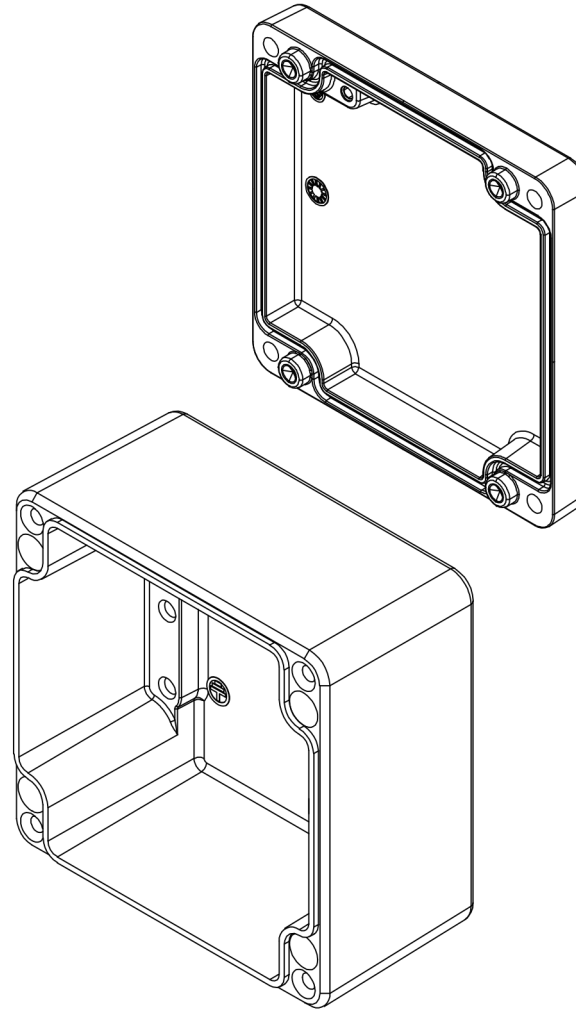
SECTION -A-A

LID





SECTION B-B

BASE



*=Conical form tapering downwards
Free dimensions-tolerance to GTA 13/5DIN 1688

Material:- A ISi12	TITLE :- GBA Aluminiumgehäuse ALUMINIUM ENCLOSURE 122 X 120 X 81	<small>This drawing and any information or descriptive material set out on it are the Confidential property of Company Name and MUST NOT BE DISCLOSED, COPIED in whole or part or used for any purpose without the written permission of Company Name.</small>								
Finish:- Natural/ RAL 7001 Grey										
General Tolerances DIN ISO - Linear Tol.: , Angular Tol.: Surface Finish: All Dimensions: mm	 <small>Industrielösungen GmbH</small>	<table border="1"> <tr> <td>DRAWN BY:</td> <td>DATE</td> </tr> <tr> <td>HK</td> <td>2 2/ 4/ 22</td> </tr> <tr> <td>CHECKED BY:</td> <td>DATE</td> </tr> <tr> <td>DN</td> <td>2 2/ 4/ 22</td> </tr> </table>	DRAWN BY:	DATE	HK	2 2/ 4/ 22	CHECKED BY:	DATE	DN	2 2/ 4/ 22
DRAWN BY:	DATE									
HK	2 2/ 4/ 22									
CHECKED BY:	DATE									
DN	2 2/ 4/ 22									
 FIRST ANGLE PROJECTION DO NOT SCALE	Moltkestraße 55-57 32257 Bünde Tel: +49 (0) 5223 / 819 60 -55 Fax: +49 (0) 5223 / 819 60 -56	CODE: DRG. NO. GBA012212081 REV 00								
Description Rev. Date		SHEET 1 OF 1								